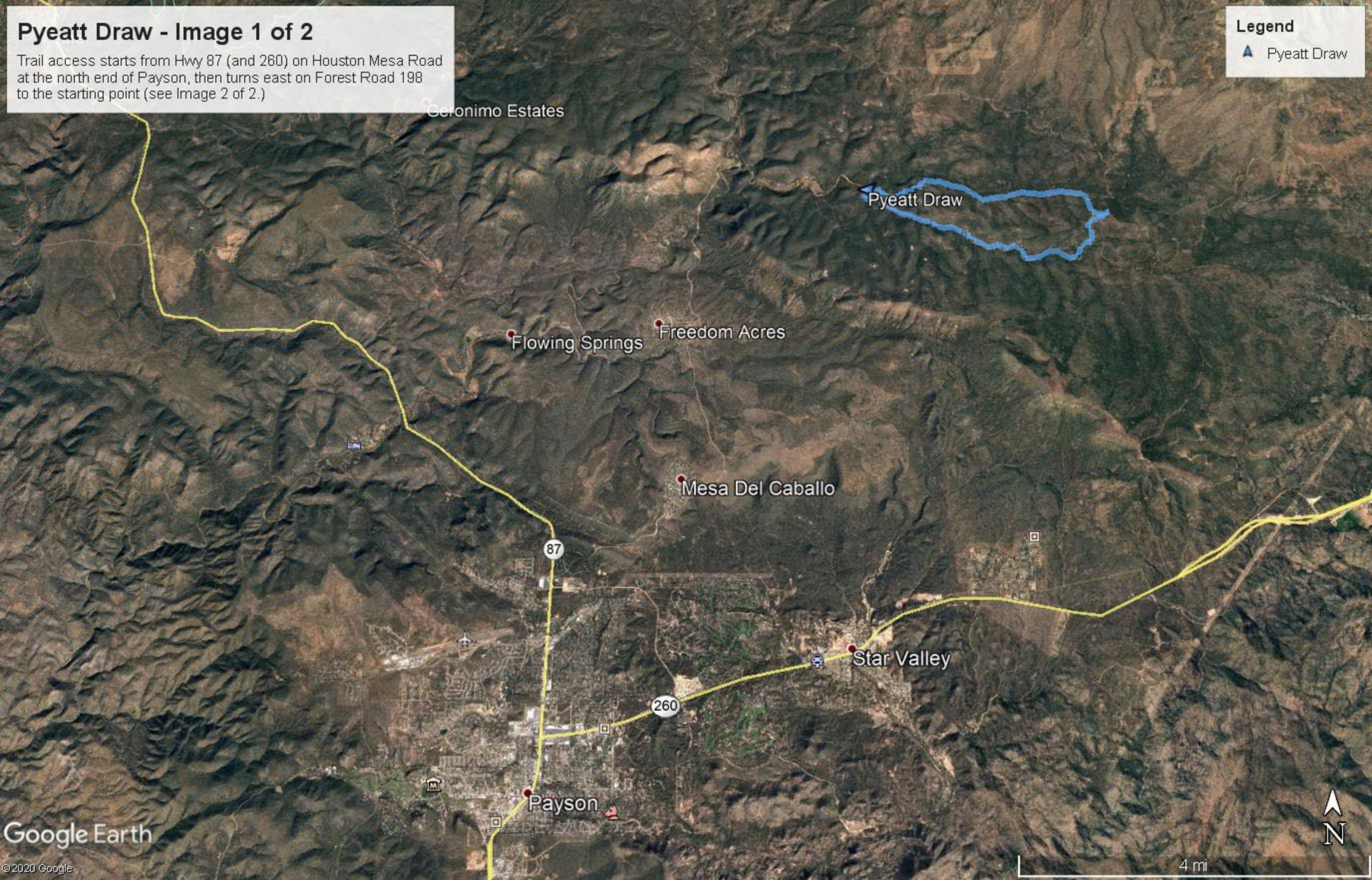


# Pyeatt Draw - Image 1 of 2

Trail access starts from Hwy 87 (and 260) on Houston Mesa Road at the north end of Payson, then turns east on Forest Road 198 to the starting point (see Image 2 of 2.)

**Legend**  
▲ Pyeatt Draw



# Pyeatt Draw - Image 2 of 2

Trail starts on the left turning south into the rocky draw, and loops back across the top on Forest Road 198 to the starting point.

**Legend**

-  Pyeatt Draw

Pyeatt Draw

